



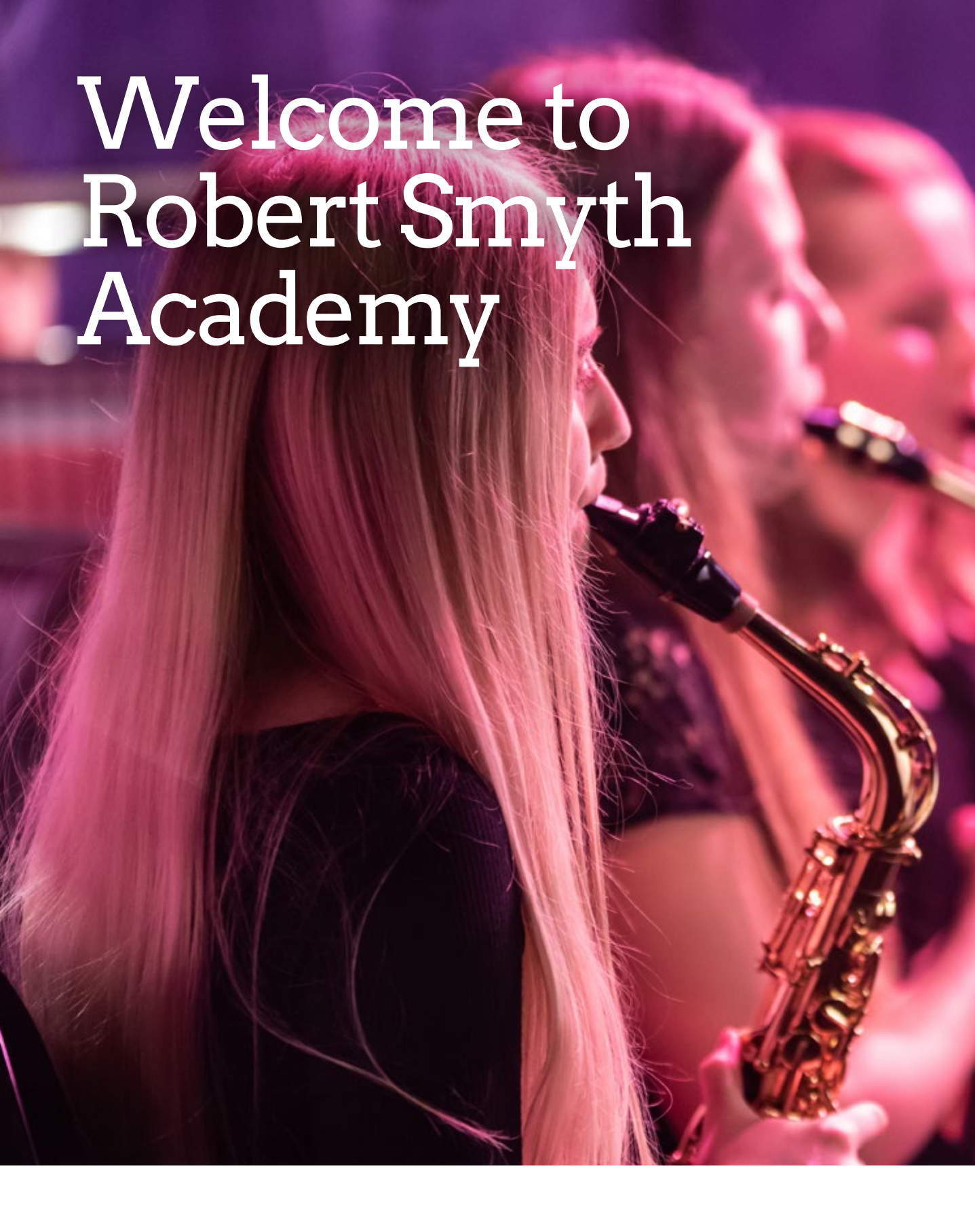
Robert Smyth Academy

Welcome to your new school



Part of Tudor Grange Academies Trust

Welcome to Robert Smyth Academy



What's inside



Welcome to your new school	05
Our values	06
Curriculum Intent	08
The Academy day	09
Equipment & expectations	12
My Child at School	
Mobile phones	
School meals	
Free School Meals	
Uniform	14
Tutor group	16
Extra curricular activities	18
Attendance & punctuality	20
FAQs	21
Key members of staff	22
What next?	24
Site map	25



“ Welcome to Robert Smyth Academy. Robert Smyth offers families a warm, welcoming setting where all children are well supported, and where their talents are nurtured through the exploration of a broad and rich curriculum. The school is oversubscribed and has been rated as 'Good' in all areas by Ofsted.”

Dan Cleary
Principal



Welcome to your new school

It is my pleasure to welcome you to your new school and to congratulate you on gaining your place in Year 7. We are anticipating a highly talented, hard working, and aspirational cohort this year and we look forward to welcoming all new students to their new school to start an exciting learning journey ahead.

We are delighted that you will be joining a thriving and high achieving community. This is a very exciting moment and we hope you take a pause to reflect on the amazing opportunities ahead.

We have high expectations of all students we teach and promote a magic mindset for learning as part of a personal development curriculum so that all children can grow and flourish. First and foremost, Robert Smyth students are caring and courteous. We provide an atmosphere of mutual respect so that all children feel safe, calm, and confident so that they can make progress and develop lifelong friendships.

We expect parents to uphold and support the policies of the school at home and in conversation with their children. This includes celebrating merits and golden tickets and making time to continue to read at home.



Welcome to Robert Smyth Academy, somewhere that you can thrive and achieve, both personally and academically. I am Associate Principal and so I work with all the College Leaders and Mr Cleary to make sure that all students are safe, learn well and become everything they can be.

It is also my responsibility to make sure that your transition from primary school goes as smoothly as

We also expect parents to ensure that children are equipped for school, have had breakfast, and understand the importance of following the rules. We do not permit the use of mobile phones for any reason and if these devices are seen or heard then they will be confiscated.

Today, your son or daughter takes their next step toward joining our family. They will benefit from the advantage of joining a setting that offers the potential to develop great friendships and relationships. Every child who embarks on this journey will benefit from both the security and a support network to promote their well-being and enable them to become successful learners.

Ultimately, our job is to ensure that all students benefit from an outstanding education so that they can lead a happy and fulfilling life. We remain hopeful that key transition events can take place in the fullest sense to prepare students for the new academic year including a summer school in August. We hope to see your child at each of these events.

Dan Cleary
Principal

possible and so you will have seen me at various events over the last year and I hope to see you at the Summer School in August just before joining us officially in year 7. Once here you will find that the academy is full of opportunities that you should be excited to take, expert teachers passionate about their subjects and support staff that will be on hand to make sure that you can access all that we offer.

Kate Nicholson
Associate Principal

Our values

We believe that your child has limitless potential and that they will best realise this by being well supported within a climate of mutual respect, excellent teaching, and well understood routines. We are here to support you in the education of your child.

Respect

Respect is the cornerstone of our school culture and community. We are committed to providing an environment where all students can flourish.

Our crest includes the Tudor Rose which reminds us of our commitment to mutual respect, harmony, peace, and our connection to schools within the Tudor Grange family.

Succeed

We are committed to the individual and collective success of all our students. Our school is named after Robert Smyth, a local man, who walked to London to pursue his fortune. He was successful and became Comptroller of the City of London in 1598.

As part of our crest, the Coat of Arms include two dragons, defending the city gates and the flag of St. George who was venerated for bravery and courage. This symbol reminds us of the importance of bravery and courage in the pursuit of success and adventure.

Aspire

We promote aspiration in all that we do. The final element of our crest is an outline of the original Market Harborough Grammar School that was founded in 1607 by Robert Smyth after his successes in London. As a result of his achievements he wanted more children to have opportunities to be successful and he left money for the education of poor children. This symbol reminds us that we must always promote the aspirational force of education, embrace the joy of learning, and leave something positive behind. This is how we all get better and feel better about learning.





Our Academy

Pastoral care and guidance is at the heart of our school system. Your child will join one of four established college groups and this community will include key staff who will support their progress through school.

Bragg College



This college is named in celebration of Sir William Henry Bragg, eminent physicist, winner of the Nobel Prize for Physics in 1915 and a former student of the original Market Harborough County Grammar School.

Hammond College



Francis Hammond was Headmaster of the Market Harborough County Grammar School when it moved to our site on Burnmill Road in 1909. Our renowned arboretum is also named 'The Hammond Arboretum' in recognition of his contribution to the creation of this valuable resource.



Logan College



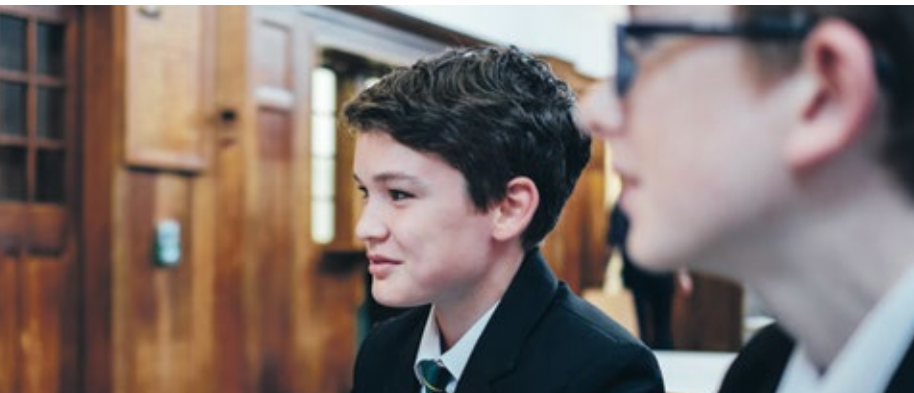
Logan college is named in celebration of the lives and work of local sisters Isobel and Nora Logan, who were both heavily involved in women's rights and suffrage in the late nineteenth and early twentieth centuries.

Moseley College

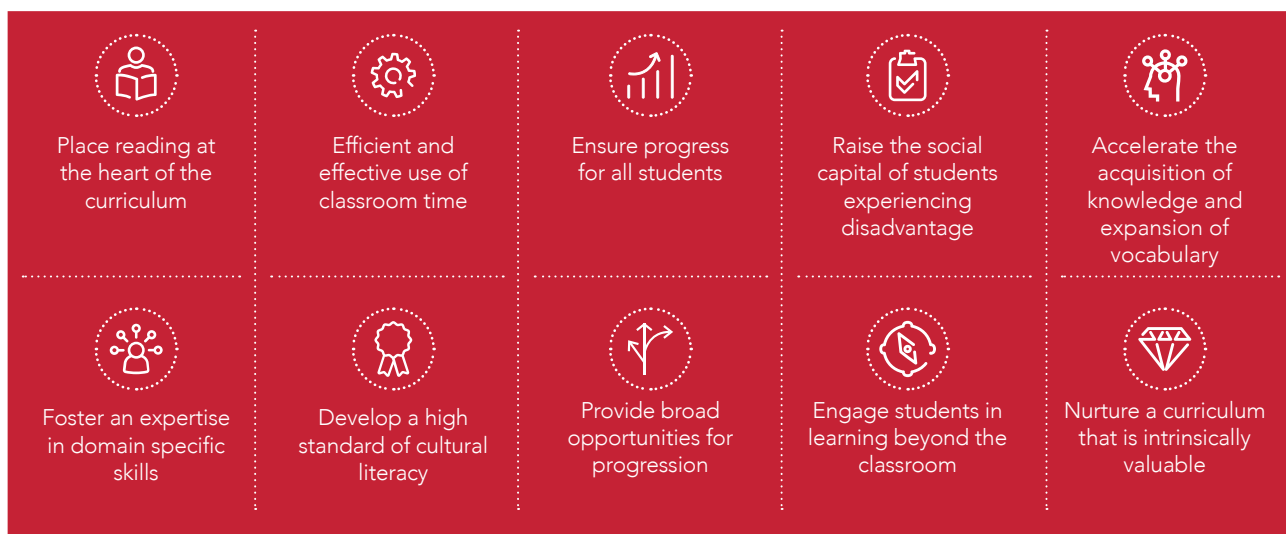


Mr and Mrs Moseley had a long association with the Market Harborough County Grammar School. Mr Moseley was chair of governors for several years and Mrs Moseley was a district councillor in the 1950s and an enthusiastic supporter of the school, often attending award ceremonies to give out prizes.

Our assemblies, competitions, celebrations and charity events all foster a pride in belonging to a college. Students are encouraged to participate fully in events and activities.



Curriculum Intent



Curriculum Statement: Key Stage 3

In Key Stage 3, all students experience a curriculum that is characterised by exploration, breadth, and depth. All students will develop knowledge in each subject area that has been defined as fundamental and students will also acquire subject specific skills through the application of fundamental knowledge.

Our ambition is that all students will know more, remember more and be able to do more in every element of their curricular experience. This is our definition of progress over time.

All programmes of study have been carefully planned and sequenced to accelerate the development of fundamental knowledge and skills.

Schemes of learning do this first by building on the prior attainment of students and their starting points as they begin secondary school. Our curriculum is carefully planned to scaffold up from the end points of the National Curriculum (Key Stage 2).

These curriculum plans allow students to build confidence through the application of knowledge and skills developed in primary school. The intuitive sequencing

of the curriculum empowers students to learn more, and this also prepares students for increasing levels of challenge and demand.

Students will develop a broad base of knowledge that will enable them to progress through their sequence of learning in each subject. Students will acquire skills that have been carefully built into each learning journey. The breadth of specialist subjects that students will study provides an outstanding basis for exploration in each subject and of their own personal development as a learner.

“The breadth of specialist subjects that students will study provides an outstanding basis for exploration in each subject and of their own personal development as a learner.”



“ Students leave every lesson with a buzz of accomplishment. There is a weekly positive points competition with rewards to be earned.. In every lesson a child will be awarded a golden ticket for their positive mindset. We are a relentlessly positive school.”



The School day

Students will have time to learn new routines and structures. Lots of people will be on hand to help them in the initial weeks.

The school provides a breakfast club from 8.00 a.m. at the main canteen for students who want or need to use this facility. This provision is offered via a letter sent at the start of term and parents will be required to sign up in advance.

Each year group has the benefit of a supervised morning break in our main canteen. This is a good opportunity for students to socialise, take on

refreshments, and have a toilet break before returning to lessons.

All students will also have a supervised lunchtime break in either our main canteen or an alternative venue such as the Main Hall. All year groups have access to hot food and snacks that can be purchased at lunchtime.

Students will finish the school day at 3.15pm, after which extra-

curricular activities will begin including Performing Arts, Music, Dance, Drama, and PE clubs.

All students will benefit from a thorough induction to ensure that they understand their timetable and can navigate the school site as part of the Year 6 induction programme.

Transport

Students can arrive at school on foot, by bicycle, car or on the school bus from certain areas.

Please note that all students who cycle to school must wear a helmet and sign up for an RSA cycle pass.

You can get free school transport if you are 11 to 16 years old and live more than 3 miles walking distance to:

- your nearest school

And, in addition:

- the nearest Leicestershire school

(Further details can be found on Leicestershire County Council's website www.leicestershire.gov.uk regarding qualification guidelines)

If you are not eligible for this then parents will need to pay if they wish their child to have a place on a bus. We currently provide a school bus from Great Glen via Fleckney, Kibworth and Foxton, Gartree and Desborough via Rushton and Rothwell.

If you require any information, please contact Student Services.



Equipment & expectations

“ Students are expected to have mini-whiteboards and pens out and on their desks at the start of every lesson to support their starter activities. We call these “Do Now” tasks ”

You need to make sure that you have the following basic equipment with you each day:

- Stationery: Black, blue, purple pen, pencil, rubber, highlighter, gluestick and pencil sharpener
- Your mini whiteboard and pen - these will be given to every student when you start at the school. Replacements can be paid for on My Child at School and collected from Student Services.
- Scientific calculator, protractor and pair of compasses for maths lessons
- Reading book
- PE kit on the days that you require it

Most of these stationery requirements, along with revision guides, can be purchased through My Child at School and collected from Student Services. All students begin their day with a

PSHE lesson at 8.45am. This will include a uniform and equipment check conducted by their tutor to ensure your child starts the day fully prepared for the learning that will take place. Spare items will be available for purchase from Student Services.

My Child at School payment App

We are a cashless school and all payments must be paid via My Child at School.

All school trips are paid this way and you will be able to give your consent to the trip, including checking and updating details of medical information





we should know about your child, when you pay for the trip online.

Please ensure that you have activated your My Child at School account before your child joins us at the start of the Autumn term.

Mobile phones

Mobile phones are not allowed to be visible throughout the school day. If seen or used they are confiscated for the day, to be collected by parents at the end of the following school day from Student Services. Failure to hand over a phone that is asked for will result in a serious sanction and is regarded as an act of extreme defiance. Please note that headphones are not permitted on our site and will also be subject to confiscation if seen.

School meals

Our Caterers' main objective is to produce healthy, tasty food on a daily basis, using local ingredients, served by a dedicated and motivated team. We encourage all of our students to recognise and choose healthy school food options and ensure that our menu reflects this by using fresh, local and seasonal products.

Sixteen07 Opening times

Breakfast	8.15am - 8.45am
Mid-morning break for years 7 & 8	10.20am - 10.45am
Mid-morning break for years 9 to 13	10.55am - 11.20am
Lunch for years 7 & 8	12.25pm - 1.00pm
Lunch for years 9, 10 & 11	1.00pm - 1.35pm

Sample menu Option 1

Tex Mex beef and vegetable burrito served with spicy potato wedges. fresh salad leaves drizzled with a mint and yogurt dip.

Fresh pineapple

Option 2

Homemade macaroni cheese served with crispy onion ring, sweetcorn, and crunchy coleslaw.

Double chocolate chip cookie

Option 3

Freshly steamed pasta served with a tomato and mascarpone sauce.

Sultana flapjack

We operate a cashless system and payments can be made by either debit or credit card via our online My Child at School system.

You will be emailed an activation code for My Child at School when your child starts in August.

Students operate the system via fingerprint recognition, which will identify them on the till and cash loader.

You will be able to view your child's food account balance and details of

purchased foods. You can set a daily spend limit of £5.00 per day; this can be increased/decreased for individual students by confirming in writing.

A consent question, enclosed in the data collection form for the biometric system must be completed. Information regarding frequently asked questions can be found on our website under biometrics.

Free school meals

The biometric system works exactly the same for all students whether they pay or have free school meals. The amount allocated for free school meals will be entered onto the system daily. However, any underspend or missed dinner will be identified by the system and will **NOT** be added to the next day's balance. Parents can also add funds on to their child's balance via My Child at School.

To register for financial assistance contact Leicestershire County Council direct at www.freeshoolmealsleicestershire.gov.uk or call 0116 454 1009.

All eligible benefits are checked using the online checking system provided by the Department for Education, which connects with your benefits.

The school reserves the right to reclaim any school benefits that are overpaid as a result of any financial misinformation received.



Uniform

RSA students are expected to attend school in full uniform. This is achieved through the partnership between school and parents.

Students will be expected to be smart and properly dressed at all times. Jeans, cord trousers and training shoes are not part of the Academy uniform and should not be worn. Belts, if worn, should be plain black with no studs. Underwear worn beneath white shirts should be plain white or flesh coloured. Hair should be neat, tidy and natural in colour; extreme styles must be avoided.

Jewellery is only allowed in moderation and should not present a health and safety risk. One pair of studs may be worn in each ear lobe, but body piercing jewellery should not be visible. No hooped earrings or bracelets are permitted.

In Years 7, 8 and 9 no make-up or nail varnish is allowed. In Years 10 and 11 a small amount of discreet make-up is allowed but lipstick, coloured lipsalve and nail varnish are not. Students must not bring make-up into school. False eyelashes are not allowed.

Please ensure that all uniform is marked clearly with your name.



Boys' Uniform	Girls' Uniform
White shirt	White blouse
Academy tie	Academy tie
Academy blazer	Academy blazer
Mid-grey tailored trousers from Uniform Direct only	Grey pleated skirt, regulation length or just above the knee from Uniform Direct only
Plain black leather shoes	Plain black leather shoes
Black or dark grey socks	Black or dark grey socks
Academy jumper (if required)	Academy jumper (if required)

Boys' Sport Uniform	Girls' Sport Uniform
RSA polo shirt	RSA polo shirt
RSA black shorts	RSA black skorts or leggings
Rugby shirt	Quarter zip sweatshirt
RSA sports socks	Skorts (skirt/short)
Trainers	RSA sports socks
Studded boots and shin pads (as required)	Trainers
Quarter zip sweatshirt (as required)	Studded boots and shin pads (as required)



The following items of Academy uniform must be ordered or purchased directly from Uniform Direct at www.uniform-direct.com or by phone on 01522 510016.

For delivery to home, currently there is a **maximum** standard delivery charge is £3.96 (exc. VAT) for all orders delivered within the UK. Free standard delivery for orders over £29.

Uniform Direct
54-56 Humberstone Gate
Leicester LE1 3PJ

- Academy blazer
- Academy tie
- Academy jumper
- School skirt
- School trousers
- RSA polo shirt
- Black shorts
- Black skort
- Rugby shirt
- Quarter zip sweatshirt
- RSA sports socks



Tutor group

Your child will spend twenty five minutes with their form tutor each morning.

These sessions will be focused on PSHE (Personal, Social Health Education) where they will spend their time completing tasks and activities each morning that will help them develop into well-rounded individuals.

We have also invested time and resources to teach children about managing their mental health and wellbeing during these morning tutorial sessions alongside a focus on tutor group reading.

Pastoral care

Your child's form tutor is responsible for personal development, support

and helping with any concerns. They can answer any questions that arise, offer advice and liaise with relevant members of staff.

Your son or daughter will also belong to a college: Bragg, Hammond, Logan or Moseley. These are led by the senior leadership team.

Bragg:	Mrs Vicky McNair
Hammond:	Mr Mark Payne
Moseley:	Miss Danielle Paterson
Logan:	Ms Lorna Kirk

The pastoral welfare of your child will be monitored and overseen by their

college leader. Some students will settle more quickly than others and your child's college leader will organise support such as mentoring in response to emerging areas of need.

We also have a trained team of safeguarding staff:

Safeguarding Lead – Mrs Vicky McNair

Deputy Safeguarding Leads

Ms Lorna Kirk

Miss Kate Nicholson

Mrs Johanna Osborne

Mr Gavin Luhrs

Mr Kevin Armstrong

Your son or daughter can also visit the colleagues in Student Services who are always happy to help.

Our building

We have science laboratories, an electronics studio, wood and metal workshops, a dedicated Design Technology block with textile and cookery rooms, drama and dance studios, a music technology suite and music practice rooms. The Academy has excellent sporting facilities including two large sports halls (seven badminton courts in total), a fitness suite, two bespoke examination PE classrooms and access to a computer room all within the sports hall area. There are also three football pitches and a rugby pitch. In addition, we have built a professional standard All-Weather pitch which can be used for a variety of sports including hockey and cricket.

We have also built new netball and tennis courts as part of a one million pound development scheme.

Homework – Satchel:One

To become effective lifelong learners it is imperative that our students master





“Students will be awarded golden tickets by their teachers for being inquisitive learners, responding to feedback, and working through the ‘struggle zone’. Every child can achieve.”

the skills necessary for successful independent learning. Learning to prioritise their time and organise their workload are crucial skills. Homework has a part to play in the development of the skills necessary for independent learning. We expect homework to be set regularly. Teachers will set a range of tasks for homework that include reading, research, ideas development, consolidation, assessment and learning.

You and your child will be able to keep track of homework using the website

Satchel:One. This software allows teachers, parents and students to see what homework has been set, when it is due and when it has been submitted.

You will receive a personalised document detailing how you login and use the parental element of Satchel:One.

Reports and Parents' Evening

Students and parents will receive an Assessment Report twice during the academic year. These will include

assessment grades, target grades and comments on learning behaviours.

There will also be a Parents' Evening when parents have the opportunity to meet with subject teachers and discuss progress.

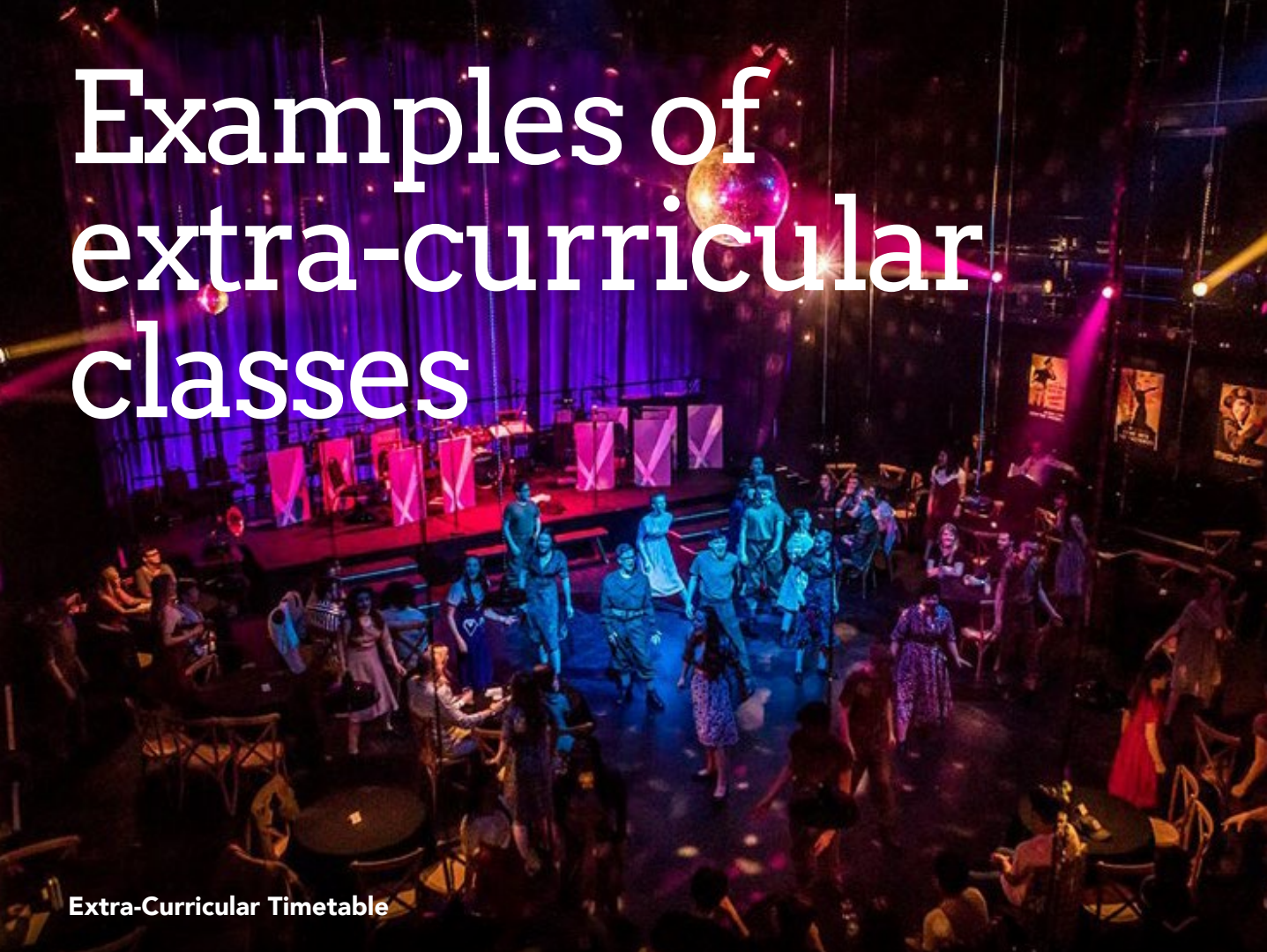
Keep up-to-date

On our website you will find a wealth of information. You can read previous copies of our newscheck bulletin and sign up with your email address to receive notifications of new editions.



If you need to contact the school you can email StudentServices@robertsmyth.tgacademy.org.uk or ParentSupport@robertsmyth.tgacademy.org.uk. If your child is going to be absent from school please complete the online absence form on the school website.

Examples of extra-curricular classes



Extra-Curricular Timetable

DAY	TUTOR TIME 8.45-9.15AM	AFTER SCHOOL 3.15-4.15PM
Monday	String Ensemble (Band Room)	
Tuesday	Senior Choir (Band Room) Years 9+	Jazz Band (Band Room) Year 9+ TBC
Wednesday	Junior Choir (Band room) Years 7-8 Flute Ensemble (Studio) All years	Secret Choir (Stage) 6th form only
Thursday	Junior Band (Band Room) Year 7-9	Rock and Pop bands All years
Friday	Percussion Ensemble (Band Room) All years Brass Ensemble (Studio) All years	Soul Patrol (Band Room) Year 9+



Please note: this list is an example, days/times may vary and is subject to review every year.

The PE department offer several extra-curricular clubs throughout the year with teams representing Robert Smyth in several competitions. The department also runs a sports leadership academy, with sports leadership groups in all years. Boys/Girls are welcome to participate in all sports. All clubs will take place after school and run from 3.20-4.15. Please note clubs, and fixture days and times will vary and as a result a weekly plan will be sent out to all parents and students with details of clubs and fixtures for each week

ACTIVITY	DAY	TIME	PLACE	STAFF
Arts Award Bronze Y7	Thursday	Lunchtime	Max Dance Studio	Mrs Routledge
Badminton – all years	Friday	After school 3.20-4.15pm	Sports Hall	Mr Grundy
Badminton – Y7 & Y8	Wednesday	After school 3.20-4.15pm	Sports Hall	Mrs Colman
Basketball all years TBC	Thursday	After school 3.20-4.15pm	Sports Hall	Mr J Davies
Brass Ensemble	Friday	8.30 to 9.05am	Music Block	Mr George
Chess Club	Daily	Lunchtime	LIB02	Mrs Coxon
Christmas Musical	Tuesday & Thursday	Lunchtime	Max Dance Studio	Miss Syngajewski
College Matches	Various (see PE Board)	After school 3.20-4.15pm	Sports Hall / Field	All PE Staff
Cricket Nets	TBC	TBC	Sports Hall	Mr Scully
Indoor Cricket	TBC	TBC	Sports Hall	Mr Scully
RSA Dance Company	Monday	Lunchtime 1.00 pm	Max Dance Studio	Mrs Routledge
Design Tech Catch Up	Monday – Thursday	1.30 to 2.15pm	K7	Mr Crook
Design Tech Catch Up	Wednesday	3.15 to 4pm	K7	Mr Crook
English Drop In Session	Wednesday	Lunchtime	J6	
Flute Ensemble	Wednesday	Tutor Time and Break	Music Block	Miss Sanderson
Fixtures	Various Days / Dates	After School	Home / Away	PE Staff
Football Y7	Wednesday	After school 3.20-4.15pm	Field	Mr Scully
Football Girls Y7 & Y8	Thursday	After school 3.20-4.15pm	Field	Miss Smith
Grade 5 Music Theory	Thursday	Lunchtime	MU02	Miss Wass
Handball Y7 to Y10	Tuesday & Thursday	After school 3.20-4.15pm	Sports Hall	Mr Grundy
Junior Band Y7 & Y8	Monday	Lunchtime	Music Block	Miss Wass
Mandarin HSK1 and 2	Monday	After school 3.20-4.15pm	Languages Block	Miss Mode
Mandarin YCT	Monday	After school 3.20-4.15pm	Languages Block	Miss Mode
Media Surgery	Monday	Lunchtime	EN09	Mrs Hackett
Netball Y7 & Y8	Wednesday	After school 3.20-4.15pm	Sports Hall	Mrs Colman / Miss Smith
Netball Shooting Practice	Monday	After school 3.20-4.15pm	Sports Hall	
Outlook Expeditions	Tuesday	Lunchtime 1pm	MA04	Mr Motivaras
Percussion Ensemble	Friday	Lunchtime	Music Block	Mr McHarg
Rugby Boys Y7 & Y8	Tuesday	After school 3.20-4.15pm	Music Block	Mr Scully/Mr Tucker
Rugby Girls	TBC	After school 3.20-4.15pm	Field	TBC
Saxophone Ensemble	Wednesday	Lunchtime	Music Block	Mrs Warner
Soul Patrol	Friday	After School	Music Block	Mr Hughes
Sports Breakfast Club	Tuesday & Thursday	Before School 8.00 to 8.30am	Sports Hall	PE Staff
Sports Leadership Y7 to Y13	Monday	After school 3.20-4.15pm	Sports Hall	Mr Scully
String Ensemble	Monday	Lunchtime	Music Block	Mr Shaw
Table Tennis	TBC	TBC	Sports Hall	Mr Grundy
Tennis	Friday	After School (May to July)	Tennis Courts	Mr Tucker
Trampolining – All years to start	Wednesday	After school 3.20-4.15pm	Sports Hall	Mr Grundy
Junior Choir	Wednesday	Lunchtime	Music Block	Mrs Smith
Youth Theatre Y7 & Y8	Wednesday	Lunchtime	Max Dance Studio	Sixth Form Student led

Attendance & punctuality

Good results are linked to good attendance and punctuality. We continually work hard to encourage high rates of attendance. It is also a key statistic reported to the Department of Education.

If your child is unwell and not going to be in school please complete the online **absence form** on the website.

On the first day of absence of a student for whom we have not received a telephone call or other message, we will contact via email or telephone

to ask the reason. Should attendance become a concern, contact with the parent/guardian will be made and medical evidence may be required.

The school uses an electronic registration system which enables us to track student attendance at all lessons

in the school day. Students who are frequently late to RSA or lessons will serve detentions and may be placed on a report to monitor their punctuality to lessons. Members of staff are often asked to comment on attendance and punctuality when writing references for students and former students.



FAQs

What happens if I get lost?

There is a map of the school in this booklet and you will also be given one when you start at the school. If you do get lost, you can ask any of the teachers or members of staff and they will all happily advise you on where to go. Alternatively, you can go to Student Services and they will be able to direct you from there. Coming to your induction day in July will help you to settle in and become familiar with the school, so don't worry.

What happens if I have an appointment during school time?

In the first instance, try not to! Where this is unavoidable your parent will need to complete the online **absence form** on the website informing of the time and date of the appointment. You will also need to let your tutor and class teacher know and then go to the Student Services to meet your parent.

What happens if I forget my lunch or have no credit on my account?

Visit Student Services to phone home and request more credit on your account.

Will I get lots of homework?

You are likely to be given some homework to complete each day, but it is up to individual teachers to set homework when they think it is necessary. It is a good idea to have the Satchel:One app on your phone if you have one.

What if I feel unwell?

Student Services is where you should go if you are feeling unwell. You will need to speak to your teacher in the first instance though so they know what is wrong as they



might be able to offer help before you go to Student Services.

Where is lost property?

Lost property is located in Student Services which is open from 8.00am – 4.00pm daily. Please ensure that all clothing is named to enable items to be reclaimed.



Key members of staff

Vicky McNair
College Leader



I am so pleased to welcome you to The Robert Smyth Academy. I am the College Leader for Bragg and part of my job is to ensure that all students

benefit from an outstanding education so that they can lead a happy and fulfilling life. I also have responsibility for Inclusion (SENCO) and safeguarding which is reflected in the high quality of teaching and personalised support offered to students by members of staff and outside agencies. You will have a huge support network within the Academy starting with your tutor who will be able to provide you with advice and guidance for any worries or concerns you may have, however big or small.

At the Academy you will be offered many opportunities to help you reach your true potential. With enthusiasm and hard work you can achieve anything, so reach for the stars! We have high expectations and standards in all areas but we also have the care, guidance and support to help you along the way. Our Academy is a very special place to be and I can't wait to meet you.

Mark Payne
College Leader



I am pleased to welcome you all to Robert Smyth Academy. As College Leader for Hammond I oversee the well being, progress and

achievement of all students in Hammond College. I recognise how important your time here is and I aim to support you so that you can realise your potential.

In Hammond College we have high expectations of every one of you and we expect you to rise to the challenge – be that academically, through sports or the arts. We expect you to try your best at all times in whatever you do. We expect that we will be proud of you and want you to be proud of Hammond College and the school.

It is an exciting journey that you are about to undertake and my advice is to enjoy the many experiences and challenges that you will face and take advantage of the many opportunities that are open to you.

Danielle Paterson
College Leader



I am absolutely delighted to be able to welcome you to Robert Smyth, an Academy in which you will not only grow, but thrive.

My name is Miss Paterson, and as a College Leader I am responsible for ensuring that all students in Moseley College are supported in terms of both their academic and personal development. My expectations of students in Moseley are clear – be respectful, work hard and believe in yourself.

In addition to ensuring students in Moseley College feel encouraged and empowered to make fantastic progress, I am also responsible for Behaviour and Attendance across the Academy.

This is just the beginning of what I'm sure will be an exciting, fulfilling and purposeful journey for all of you and I'm looking forward to helping you out along the way. My advice? Grab every opportunity with both hands and take full advantage of being part of a truly special Academy.

Lorna Kirk
College Leader



My name is Ms Kirk and I am College Leader for Logan, one of the four colleges here at Robert Smyth Academy.

Beginning secondary school and becoming a student of Robert Smyth Academy is an exciting stage for you and as College Leader, I will be here to support and encourage you on that journey.

My job is to help you in any way that I can - with clear expectations and encouraging words and actions. Your job is to work hard and be kind; it's as simple as that. I look forward to working and learning with you, as you achieve everything that you can achieve.

Gavin Luhrs
Head of Sixth Form



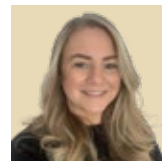
I'm Mr Luhrs, Head of Sixth Form. Our hope is that all students will grow and develop at Robert Smyth from Year 7 until Year 13 and so a few years

from now I will be welcoming you into the Sixth Form.

On your way to this, you will see older students around the Academy and many of them will support you in lessons and during extra-curricular activities.

If you have any ideas about how Sixth Form students can help you, please come and share those ideas with me; Year 12 and 13 students love to help others and get involved!

Nicola Finnemore
SENCO



My name is Mrs Finnemore. I am the SENCO at Robert Smyth Academy. I understand that all students are individual and that some students

need extra support; my job is to help with that. All students should have the opportunity to reach their full potential.

My team of Learning Support Assistants and I are here to support, differentiate, personalise and encourage students to reach their goals. Not everyone's journey looks the same. All we ask is that you try your best, stay enthusiastic and challenge yourself, always! I understand that you may feel nervous about starting something new, but that is OK. Many others will be feeling the same. We are here to answer any questions that you may have. I look forward to welcoming you soon.

Jo Osborne
SEMh Manager



Hello, my name is Mrs Osborne and I have been working at Robert Smyth for over 15 years as Behaviour Support and as a Safeguarding Officer, I am also a

Thrive Practitioner. I am here to help oversee behaviour in and out of lessons, to guide you into better choices and to support your emotional and social development so that you can thrive.

My advice to any new Year 7 students is to talk to your tutor because they are always there to help you with anything you need or if you have any worries.

Kevin Armstrong
Behaviour Manager



Hello, I am Mr Armstrong, the Behaviour Manager at Robert Smyth Academy. My job is to help you stay safe while you are at school. To help you get the best out of

every part your day, both in lessons and during breaks. On the days you might struggle I am here to help. You will see me about during lessons helping students needing support and guidance; during break times I am there to make sure you are keeping safe and able to enjoy your lunch or snack and relax with your friends. I am also part of the safeguarding team and a Thrive practitioner. My best advice starting at RSA is to enjoy it!

Beth Smith and Rebekah Dowling
Behaviour and Learning Mentors



Hello. We are Miss Dowling and Miss Smith and we are the Learning Mentors here at Robert Smyth Academy.

Our job is to encourage a happy time for you at school and ensure that your mental wellbeing is being supported throughout your years here.

Our advice for you is to always try your best in and out of lessons, have fun and don't stress, come and speak to us, your form tutor or your College Leader. We can't wait to meet you, whether it be in groups, 1-2-1 sessions or around the school during social times.



Student Services Team

Miss Green, Mrs Notter, Miss Cambridge and Miss Jonas

We at Student Services are here to help you with any queries and questions you may have, from where your next classroom is to providing your Satchel:One login details or printing off a timetable.

Forgotten or lost your tie? We have a selection of uniform you may borrow if needed or it may be in our lost property box.

We also have a range of stationery items that you can pay for on My Child at School and collect from Student

Services, including calculators and revision guides.

When you are feeling unwell, Student Services is also the place to come; we have a medical room and are able to store any medication you may need throughout the day.

Moving up from primary school is a daunting thought, so if we can do anything that helps you settle in then please come and see us.



Mrs Smith Parent Support

Hello my name is Mrs Smith, I am Parent Support and the Receptionist here at the Academy. I will be the first person your parents will speak to when they phone Robert Smyth and I can help them with any queries, be it My Child at School and Satchel:One logins or any difficulties they may have accessing them, how to contact teachers or

report an absence. I have been liaising with your parents regarding your transition from primary school to Robert Smyth.

Your parents can contact me should they need to inform you of any last-minute appointments or arrangements, and I will then let you know.

Moving to a new school is always quite daunting; however, there is always someone you are able to talk to.



What next?



Meet the Tutor Evening
Monday 1st July 5.30pm



Induction Day
Tuesday 2nd July



Summer School
Wednesday 14th – Friday 16th August



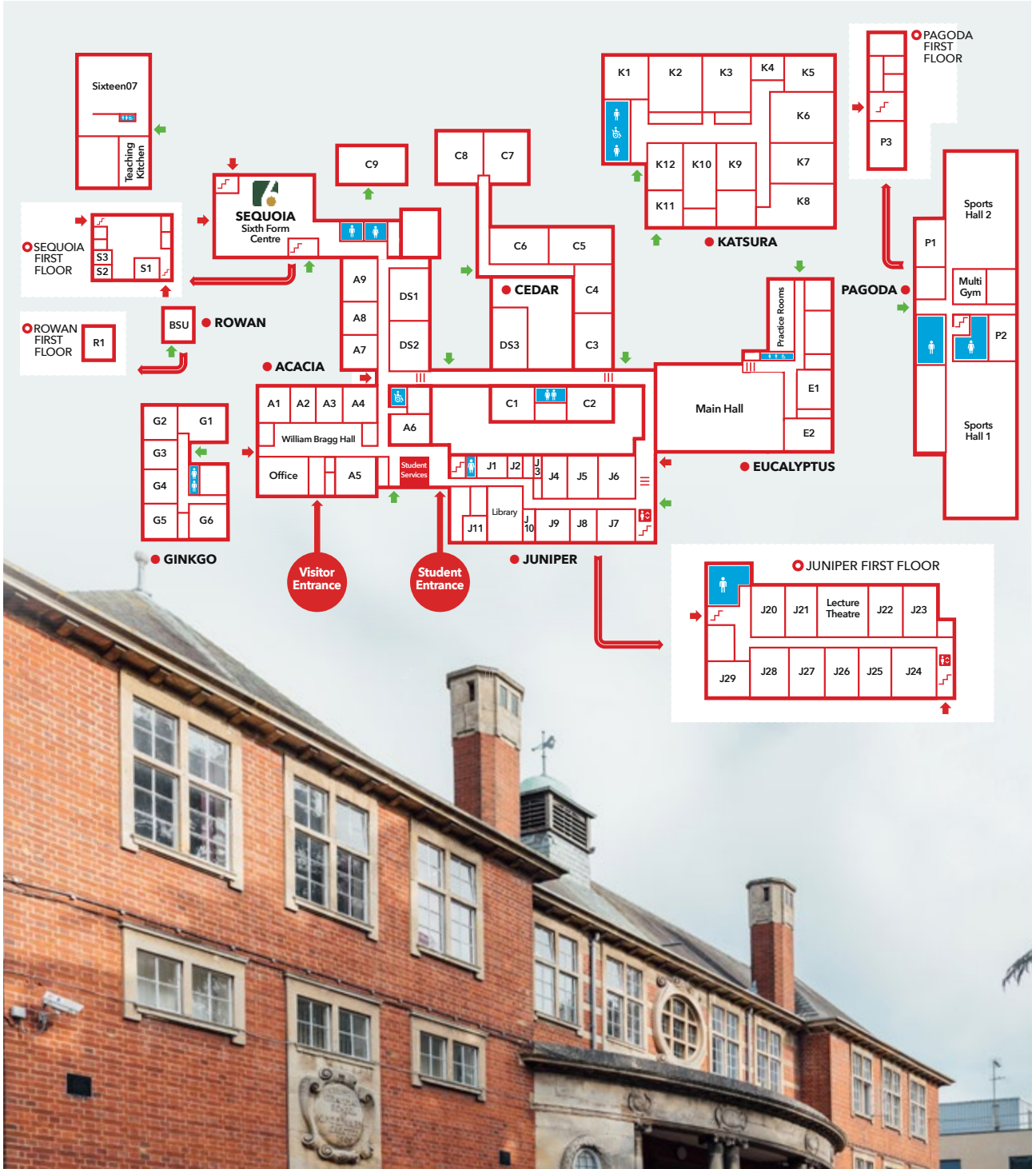


Robert Smyth Academy

KEY

- Ramped access
- Stepped access
- Toilets

- Lift
- Stairs
- Steps





Invictus

Out of the night that covers me,
Black as the pit from pole to pole,
I thank whatever gods may be
For my unconquerable soul.

In the fell clutch of circumstance
I have not winced nor cried aloud.
Under the bludgeonings of chance
My head is bloody, but unbowed.

Beyond this place of wrath and tears
Looms but the Horror of the shade,
And yet the menace of the years
Finds and shall find me unafraid.

It matters not how strait the gate,
How charged with punishments the scroll,
I am the master of my fate,
I am the captain of my soul.

William Ernest Henle



Robert Smyth Academy

Robert Smyth Academy
Burnmill Road
Market Harborough
Leicestershire
LE16 7JG

Talk to us

Tel 01858 440770

Email office@robertsmyth.tgacademy.org.uk

Visit robertsmyth.tgacademy.org.uk