

Geography A Level

Board: EDEXCEL, Specification 9GE0

Mr J Davies jdavies@robertsmyth.tgacademy.org.uk

The course

The themes of the course are about the interactions between societies, economies, cultures and environments. There is a balance between physical geography (coasts, rivers, natural hazards), human geography (population, development, urban, rural issues) and environmental geography (ecosystems, climate change, global warming).

Residential field courses and day trips will be organised to develop fieldwork skills. Fieldwork skills will be assessed as a piece of coursework in Year 13.

Course content and assessment Year 12

Dynamic Landscapes

- Tectonic Processes and Hazards
- Coastal Landscapes and Change

Dynamic Processes

- Globalisation
- Regenerating Places

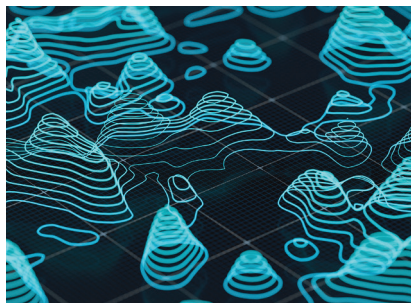
Year 13

Physical Systems and Sustainability

- The Water Cycle and Water Insecurity
- The Carbon Cycle and Energy Security
- Climate Change Futures

Human Systems and Geopolitics

- Superpowers
- Global Development and Connections



Assessment:

Three exams assessing subject content and synoptic links across units 1 to 4. In addition, students will complete an individual investigation based on an issue related to any of the four units.

Where next?

Almost any subject goes with geography. It is supported by and complements most of the A Levels on offer at Robert Smyth Academy. It is considered as a bridge between the Arts and Sciences.

Very few careers specifically require a qualification in geography, but you will find that the course keeps the door open on a wide range of possible careers.

The majority of our students have gone on to higher education where they have taken a wide range of degree courses.

